



# CAPITAL

Collection



## Richmond, Kingston, and Greenwich

*Coordinated FR fabrics with three shading opacities*

2300 & 3000mm | 89 & 127mm

# Richmond, Kingston, and Greenwich

An amazing trio of fire retardant fabrics with *matching colours for coordination* across multiple spaces.

Their tactile nature and palette of essential colour tones make these fabrics as beautiful as they are functional.

Six colours in the Kingston range also boast the option of same-colour backing.



Certified fire retardancy



Coordinated colours across three ranges



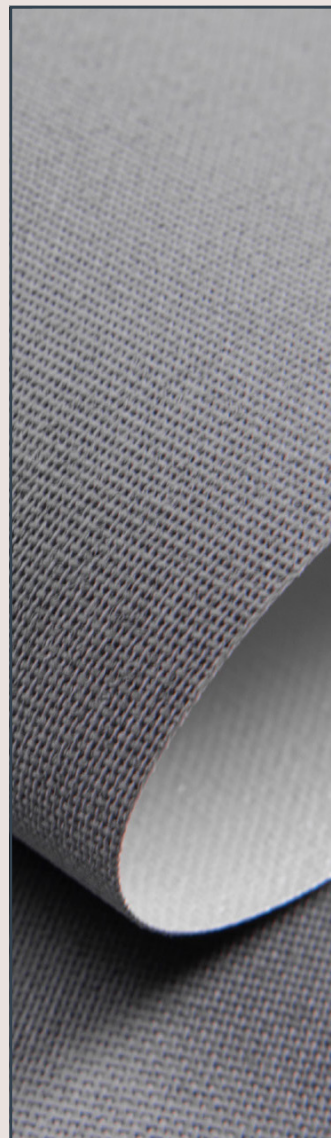
Suitable for vertical blinds



Richmond Pebble



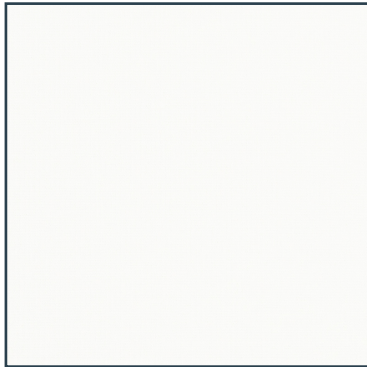
Kingston Mouse  
Grey



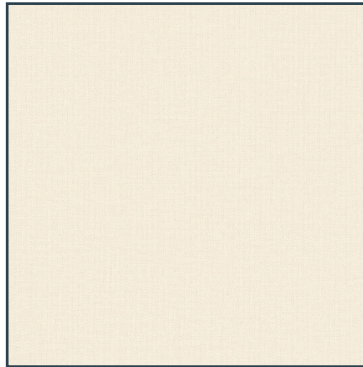
Greenwich Pebble

# Richmond

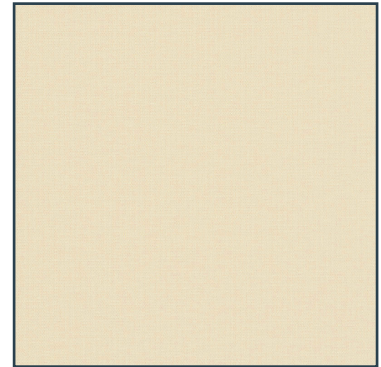
Light-filtering FR fabric with tactile appeal



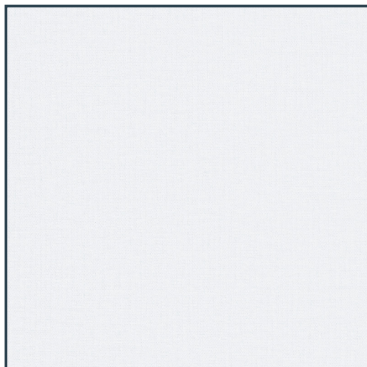
**Blanc** 2300/3000mm  
89/127mm



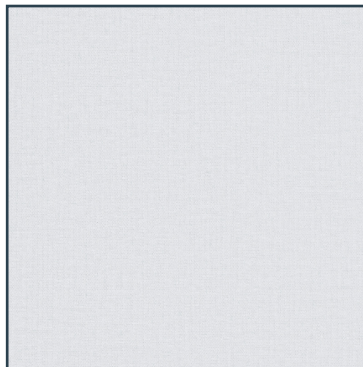
**Corn silk** 2300/3000mm  
89/127mm



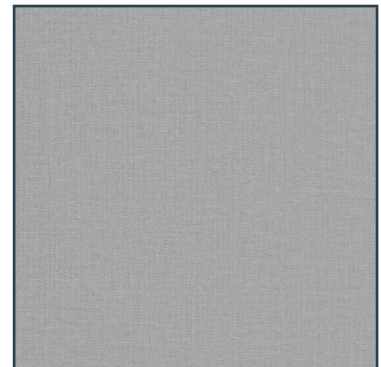
**Bisque** 2300/3000mm  
89/127mm



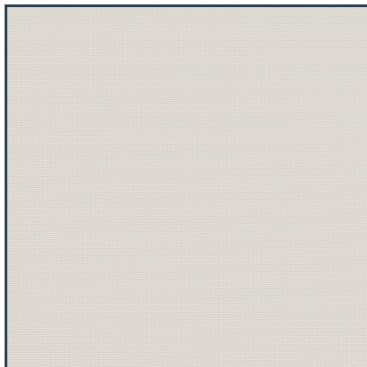
**Mist** 2300/3000mm  
89/127mm



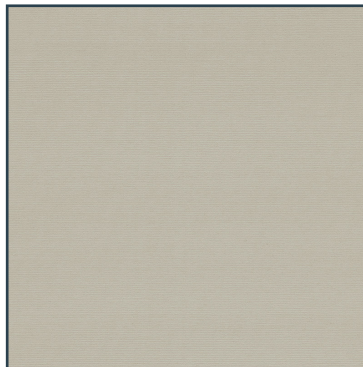
**Glacier Grey** 2300/3000mm  
89/127mm



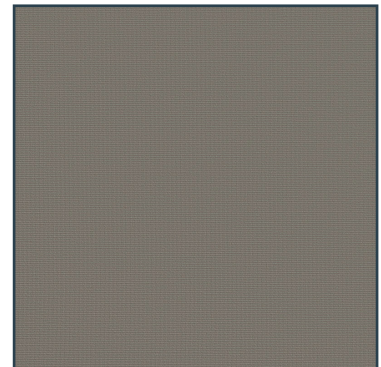
**Mouse Grey** 2300/3000mm  
89/127mm



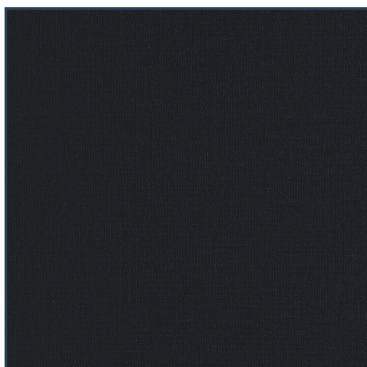
**Moth** 2300mm  
89/127mm



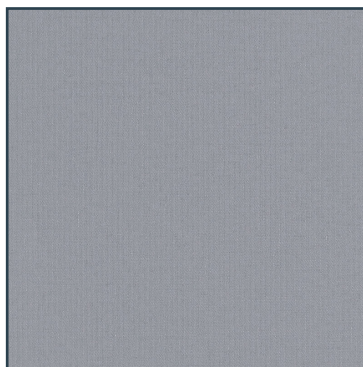
**Linen** 2300mm/3000mm  
89/127mm



**Dark Grey** 2300mm/3000mm  
89/127mm



**Charcoal** 2300mm  
89/127mm



**Pebble** 2300/3000mm  
89/127mm

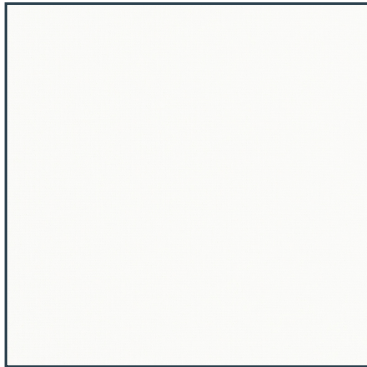
Richmond	
Product	Roller & Vertical
Composition	100% PES
Roller - roll width	2300mm & 3000mm
Roller - roll length	ca. 30m
Vertical - roll length	89mm & 127mm
Vertical - roll length	ca. 150m
Weight	220g/m <sup>2</sup>
Thickness	0.30mm
FR Classifications	BS 5867-2, TYPE B   DIN 4102, CLASS B1   NF P 92 503-507, CLASS M1
Colour Fastness (ISO 105 - B02)	Grade 6-7
Cleaning	Damp cloth
Recommended cut method	Cold Cut
Oeko-Tex Standard 100	Yes
Suitable for moist conditions	Yes

Technical Specifications								
Colour	Thermal					Visual		
	Ts %	RS %	As %	GTOT INT GLAZING C		Tv %	Rv %	Av %
				GTOT	CLASS			
Blanc	16	72	12	0.34	2	15	84	1
Glacier Grey	8	51	40	0.4	1	9	54	37
Mist	15	62	23	0.37	1	11	67	22
Cornsilk	17	64	19	0.36	1	15	71	14
Mouse Grey	2	29	69	0.47	1	0	30	70
Bisque	13	64	23	0.36	1	9	69	22
Dark Grey	18	13	69	0.53	0	6	16	78
Linen	10	37	53	0.50	1	5	41	54
Moth	7	48	45	0.41	1	5	50	45
Charcoal	8	3	89	0.56	0	2	4	94
Pebble	2	32	66	0.46	1	2	32	66

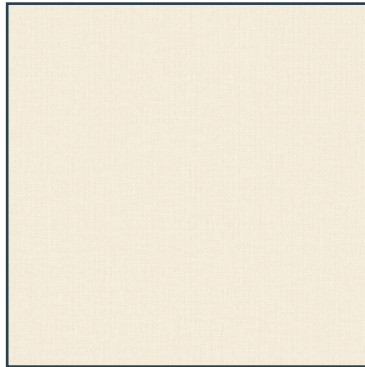
<b>Ts</b> = Solar Transmittance	<b>Rs</b> = Solar Reflectance	<b>As</b> = Solar Absorbance	<b>Tv</b> = Visual Transmittance	<b>Rv</b> = Visual Reflectance	<b>Av</b> = Visual Absorbance
<b>Gtot</b> = Total solar energy reflectance		<b>Glazing C</b> = Double glazing as described in EN 14501:2021		<b>Glazing D</b> = Solar control glazing as described in EN 14501:2021	

# Kingston

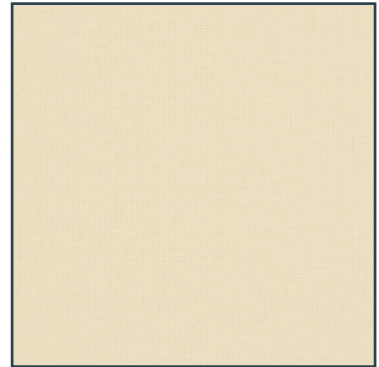
An FR blackout counterpart to Richmond



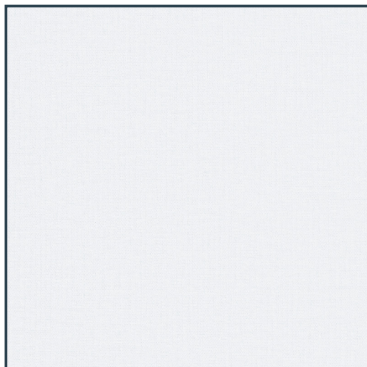
**Blanc** 2300/3000mm  
89/127mm



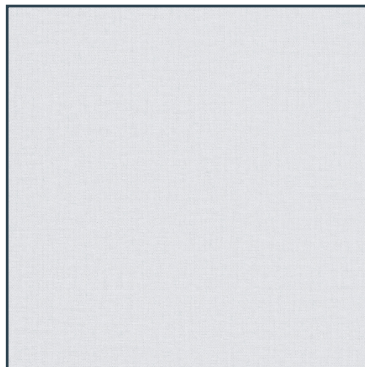
**Corn silk\*** 2300/3000mm  
89/127mm



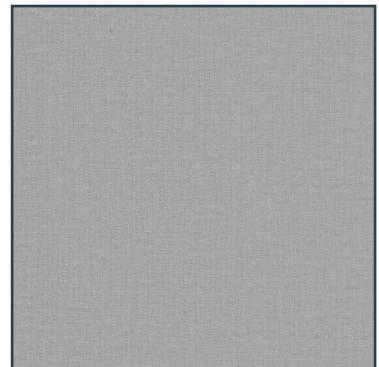
**Bisque** 2300/3000mm  
89/127mm



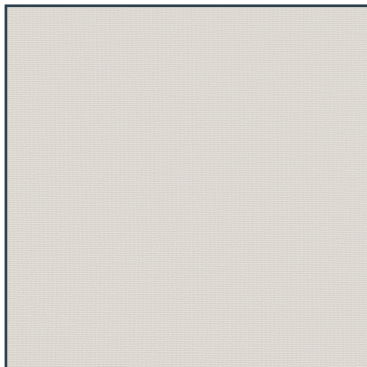
**Mist\*** 2300mm  
89/127mm



**Glacier Grey\*** 2300/3000mm  
89/127mm



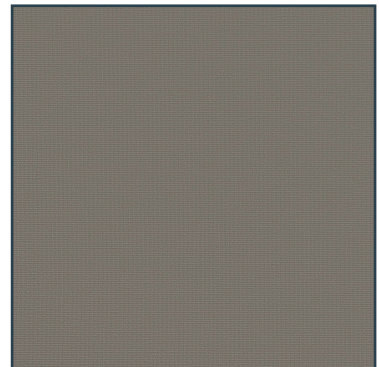
**Mouse Grey\*** 2300/3000mm  
89/127mm



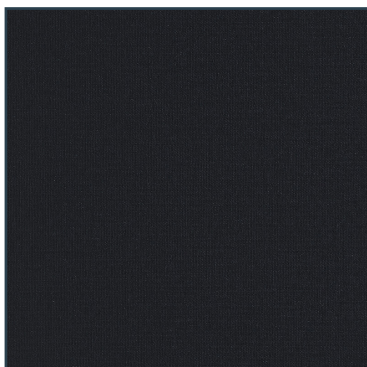
**Moth\*** 2300mm  
89/127mm



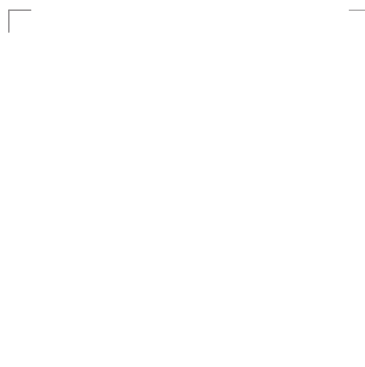
**Linen** 2300mm/3000mm  
89/127mm



**Dark Grey** 2300mm/3000mm  
89/127mm



**Charcoal\*** 2300mm  
89/127mm



\* also available with a self-coloured blackout backing

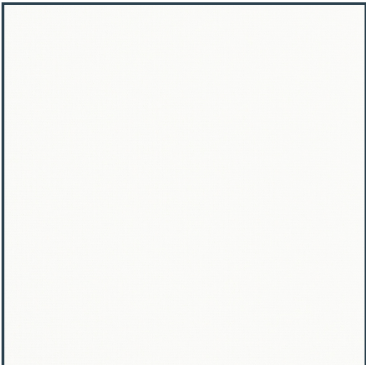
Kingston	
Product	Roller & Vertical
Composition	100% PES
Roller - roll width	2300mm & 3000mm
Roller - roll length	ca. 30m
Vertical - roll length	89mm & 127mm
Vertical - roll length	ca. 150m
Weight	420g/m <sup>2</sup>
Thickness	0.50mm
FR Classifications	BS 5867-2, TYPE B   DIN 4102, CLASS B1   NF P 92 503-507, CLASS M1
Colour Fastness (ISO 105 - B02)	Grade 6-7
Cleaning	Damp cloth
Recommended cut method	Cold Cut
Oeko-Tex Standard 100	Yes
Suitable for moist conditions	Yes

Technical Specifications								
Colour	Thermal					Visual		
	Ts %	RS %	As %	GTOT INT GLAZING C		Tv %	Rv %	Av %
				GTOT	CLASS			
<b>Kingston</b>								
Shell	0	71	29	0.34	2	0	84	16
Glacier Grey	0	71	29	0.34	2	0	84	16
Mist	0	71	29	0.34	2	0	84	16
Cornsilk	0	71	29	0.34	2	0	84	16
Mouse Grey	0	71	29	0.34	2	0	84	16
Bisque	0	71	29	0.34	2	0	84	16
Dark Grey	0	71	29	0.34	2	0	84	16
Linen	0	71	29	0.34	2	0	84	16
Moth	0	71	29	0.34	2	0	84	16
Charcoal	0	71	29	0.34	2	0	84	16
<b>Kingston Dual</b>								
Cornsilk	0	68	32	0.36	2	0	71	29
Mist	0	65	35	0.37	2	0	66	34
Glacier Grey	0	52	48	0.43	2	0	52	48
Mouse Grey	0	26	74	0.55	2	0	28	72
Moth	0	49	51	0.44	2	0	51	49
Charcoal	0	5	95	0.64	2	0	5	95

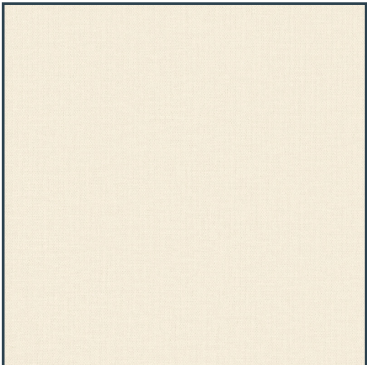
<b>Ts</b> = Solar Transmittance	<b>Rs</b> = Solar Reflectance	<b>As</b> = Solar Absorbance	<b>Tv</b> = Visual Transmittance	<b>Rv</b> = Visual Reflectance	<b>Av</b> = Visual Absorbance
<b>Gtot</b> = Total solar energy reflectance		<b>Glazing C</b> = Double glazing as described in EN 14501:2021		<b>Glazing D</b> = Solar control glazing as described in EN 14501:2021	

# Greenwich

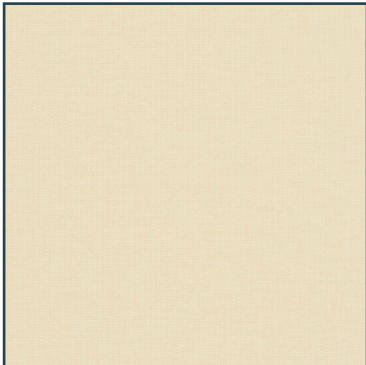
Reflective FR dimout option for optimal temperature control



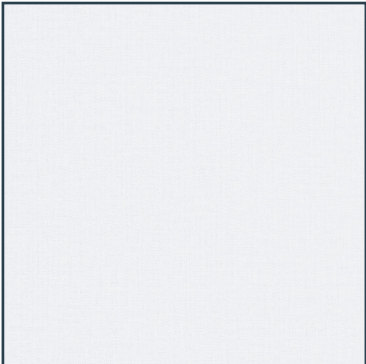
**Blanc** 2300/3000mm  
89/127mm



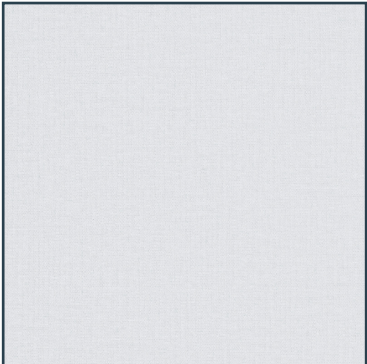
**Corn silk** 2300/3000mm  
89/127mm



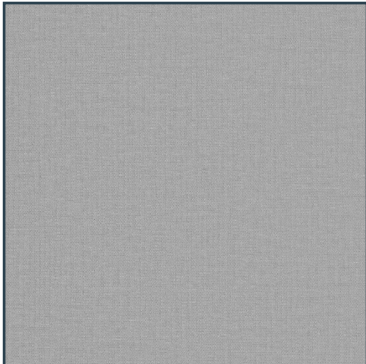
**Bisque** 2300/3000mm  
89/127mm



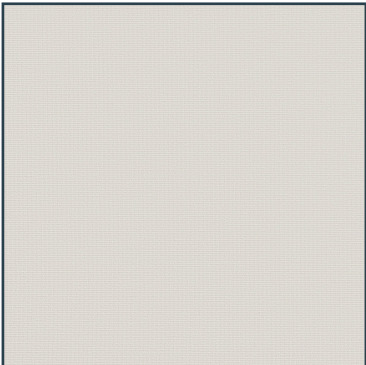
**Mist** 2300mm  
89/127mm



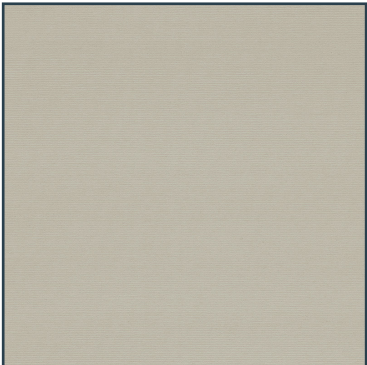
**Glacier Grey** 2300/3000mm  
89/127mm



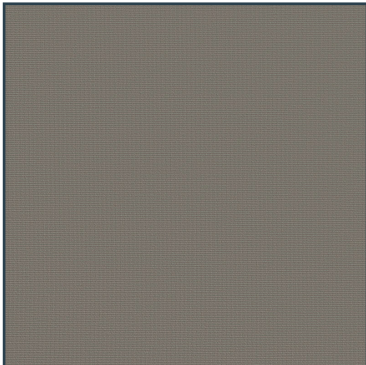
**Mouse Grey** 2300/3000mm  
89/127mm



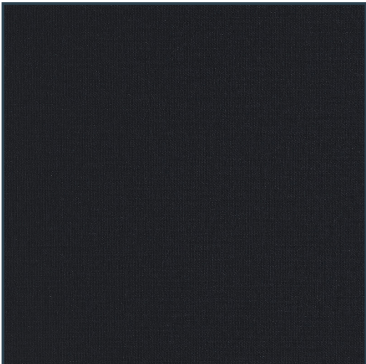
**Moth** 2300mm  
89/127mm



**Linen** 2300mm/3000mm  
89/127mm



**Dark Grey** 2300/3000mm  
89/127mm



**Charcoal** 2300mm  
89/127mm

Greenwich	
Product	Roller
Composition	100% PES
Roller - roll width	2300mm & 3000mm
Roller - roll length	ca. 30m
Vertical - roll length	89mm & 127mm
Vertical - roll length	ca. 150m
Weight	240g/m <sup>2</sup>
Thickness	0.35mm
FR Classifications	BS 5867-2, TYPE B   DIN 4102, CLASS B1
Colour Fastness (ISO 105 - B02)	Grade 6-7
Cleaning	Damp cloth
Recommended cut method	Cold Cut
Oeko-Tex Standard 100	Yes
Suitable for moist conditions	Yes

Technical Specifications								
Colour	Thermal					Visual		
	Ts %	RS %	As %	GTOT	CLASS	Tv %	Rv %	Av %
Shell	12	76	12	0.32	2	9	85	6
Glacier Grey	6	67	27	0.35	1	3	75	22
Mist	12	68	20	0.35	1	7	75	18
Cornsilk	13	71	16	0.34	2	10	79	11
Mouse Grey	1	52	47	0.4	1	0	59	41
Bisque	11	70	19	0.34	2	7	77	16
Dark Grey	2	49	49	0.4	1	1	54	45
Linen	5	64	31	0.38	1	3	66	31
Moth	1	60	39	0.37	1	2	63	35
Charcoal	1	54	45	0.39	1	0	55	45

Ts = Solar Transmittance	Rs = Solar Reflectance	As = Solar Absorbance	Tv = Visual Transmittance	Rv = Visual Reflectance	Av = Visual Absorbance
Gtot = Total solar energy reflectance		Glazing C = Double glazing as described in EN 14501:2021		Glazing D = Solar control glazing as described in EN 14501:2021	